

Two-way Pressure Actuated Water Valves

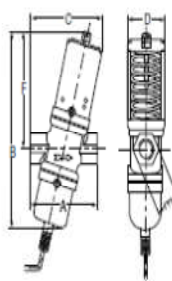
These pressure actuated modulating valves control the quantity of water to a condenser by directly sensing pressure changes in a refrigerant circuit.

The valves can be used in non-corrosive refrigerant systems. Ammonia power elements and valves designed for salt-water applications are available.

The valves have a quick opening characteristic and open on pressure increase (direct acting). Reverse acting (close on pressure increase) is possible.

Features

- Pressure balanced valve design
- High refrigerant pressure resistant bellows
- Pressure actuated
- 3/8, 1/2, 3/4" are angled body type valves with high Kv value
- 3/8" up to 2" pressure valves "all range" types
- Quick opening valve characteristics
- No close fitting or sliding parts in water passages
- Easy to disassemble. All parts can be replaced
- Special bronze bodies and monel parts
- Power elements with stainless steel bellows available
- Wide range of pressure connection styles
- Nickel plated seats available for 3/8, 1/2, and 3/4" valves
- Direct/reverse action



Valve Size	Dimension in mm					
	A	B	C	D	E	F
3/8"	69	153	66	43	18	89
1/2"	80	170	86	51	27	100
3/4"	91	183	95	55	36	110

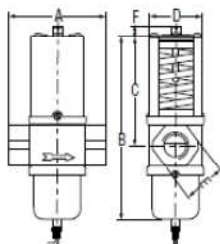
Two-way Pressure Actuated Water Valves

Ordering Codes	Range (bar)	Body Style	Size Thread according to ISO 228	Style	Capillary Length	Additional Features It is possible to change Style 13 into Style 45A by ordering KIT031N600
V46AA -9600	5...18	Angled	3/8"	13	75	---
V46AA -9608*						With special washer to prevent waterhammer at low flow capacity
V46AA -9610						With special washer to prevent waterhammer at low flow capacity/nickel plated seat
V46AA -9602*				13	100	Nickel plated seat/longer capillary
V46AA -9950				34	75	Nickel plated seat/ solder connection
V46AA -9951*						.040" i.d.cap./solder connection
V46AB -9600			1/2"	13	75	---
V46AB -9950				34		Solder connection/ "062" id.cap
V46AC -9600			3/4"		75	---
V46AC -9606				13	120	Longer capillary
V46AC -9951				34	75	Solder connection
V46AA -9300	5...23	Angled	3/8"	5	-	---
V46AA -9301*						Nickel plated seat, high range. With washer to prevent waterhammer at low flow capacity
V46AA -9606				13	75	Nickel plated seat, high range
V46AA -9609*						Nickel plated seat, high range. With washer to prevent waterhammer at low flow capacity
V46AA -9510						High range
V46AB -9300			1/2"	5	-	---
V46AB -9605				13	75	Nickel plated seat, high range
V46AB -9951				34		Solder connection,high range
V46AB -9510				50	75	High range
V46AC -9300			3/4"	5	-	---
V46AC -9605				13	75	Nickel plated seat, high range
V46AC -9502				50	140	Longer cap.
V46AC -9510					75	High range

Two-way Pressure Actuated Water Valves



V46 Straight



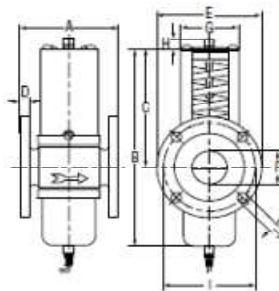
Valve Size	Dimension in mm					
	A	B	C	D	E	F
1"	124	233	139	72	50	13
1¼"	125	243	145	72	58	13

Ordering Codes	Range (bar)	Body Style	Size Thread according to ISO 7-Rc	Style	Capillary Length	Additional Features It is possible to change Style 13 into Style 45A by ordering KIT031N600
V46AD -9300	5...18	Straight	1"	5	---	---
V46AD -9510				50	75	
V46AD -9600				13	75	
V46AE -9300			1¼"	5	---	
V46AE -9510				50	75	
V46AE -9600				13	75	
V46AD -9511	10...23	Straight	1"	50	75	High range
V46AE -9512			1¼"			

Two-way Pressure Actuated Water Valves



V46 Flanged



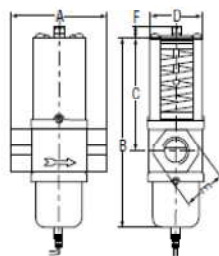
Valve Size	Dimensions in mm									
	A	B	C	D	E	F	G	H	I	J
1½"	137	244	144	18	150	47	67	13	110	18
2"	168	304	164	20	165	57	90	18	125	
2½"	172				185	70			145	

Ordering Codes	Range (bar)	Body Style	Size DIN2533 Flang Connections	Style	Capillary Length	Additional Features It is possible to change Style 13 into Style 45A by ordering KIT031N600			
V46AR-9300	5...18	Straight	1½"	5	---	---			
V46AR-9600				13	75				
V46AR-9700				15	For ammonia applications				
V46AS-9300	5...11.5		2"	5		---			
V46AS-9301	11...18								
V46AT-9300	5...11.5		2½"						
V46AT-9301	11...18								

Two-way Pressure Actuated Water Valves



V46 Straight



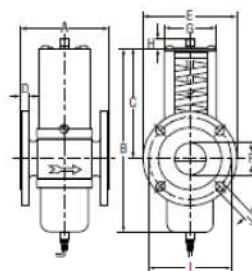
Valve Size	Dimension in mm					
	A	B	C	D	E	F
3/8"	68	161	80	42	32	10
1/2"	79	165	86	52	29	
3/4"	86	175	96	55	35	
1"	124	246	139	71	39	13
1 1/4"		254	144		48	

Ordering Codes	Range (bar)	Body Style	Size thread according to ISO 228	Style	Capillary Length	Additional Features It is possible to change Style 13 into Style 45A by ordering KIT031N600		
V46BA-9600	5...18	Straight	3/8"	13	75	---		
V46BB-9600			1/2"					
V46BC-9600			3/4"					
V46BD-9600			1"				120	Longer capillary
V46BD-9601								
V46BE-9510			50	75	---			
V46BE-9600			13					
V46BE-9601				120	Longer capillary			
V46BA-9510	5 ...23		3/8"	50	75	---		
V46BB-9510			1/2"					
V46BC-9510			3/4"				140	Longer capillary
V46BC-9511								
V46BD-9510	1"		75		---			
V46BE-9511	10...23		1 1/4"		150	Longer capillary		

Two-way Pressure Actuated Water Valves



V46 Flanged



Valve Size	Dimensions in mm									
	A	B	C	D	E	F	G	H	I	J
1½"	135	244	144	14	150	47	67	13	110	18
2"	162	304	164	16	165	57	90	18	125	
2½"	172				185	70			145	

Ordering Codes	Range (bar)	Body Style	Size DIN 86021 flange connections	Style	Capillary Length		
V46BR-9510	5...18	Straight	1½"	50	75		
V46BR-9600				13			
V46BS-9300	5...11.5		2"	5	---		
V46BS-9301	11...18						
V46BT-9300	5...11.5		2½"				
V46BT-9301	11...18						

Pressure Actuated Water Valves, Low Flow

The V46SA is a direct acting, "all range", pressure actuated modulating valve, used to control the waterflow to a condenser by directly sensing pressure changes in a non-corrosive refrigerant circuit.

The V46SA is specially designed for use on equipment requiring a low condenser waterflow such as icemakers, small heatpumps and watercoolers. The springhousing and power element are rolled to the valve body.

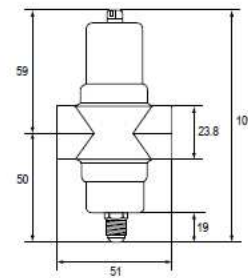
Rubber diaphragms seal the water away from the range spring and bellows part so these are not submerged in water where they would be subject to sedimentation and corrosion.

The valve can be ordered style 5 (without capillary), style 13, style 34 and style 50 (incl. 75 cm capillary).

The capillary part will be delivered separated from the valve.

Features

- Valve designed for low flow
- "All range" power element and spring housing
- Small dimensions
- Pressure actuated
- Various pressure connection style
- High refrigerant pressure resistant bellows



Dimensions in mm

Ordering Codes	Range (bar)	Body Style	SizeThread according to ISO 228	Style	Capillary Length	Additional Features It is possible to change Style 13 into Style 45A by ordering KIT031N600
V46SA-9101	5...23	Straight	3/8"	45A	75	Capillary soldered to power element
V46SA-9110				50		Capillary separate
V46SA-9300				5	---	---
V46SA-9600				13	75	Capillary separate
V46SA-9950				34		---
V46SA-9951						Capillary soldered to power element

REFRIGERATION COMPONENTS

For further information and additional models see Product Installation Guide