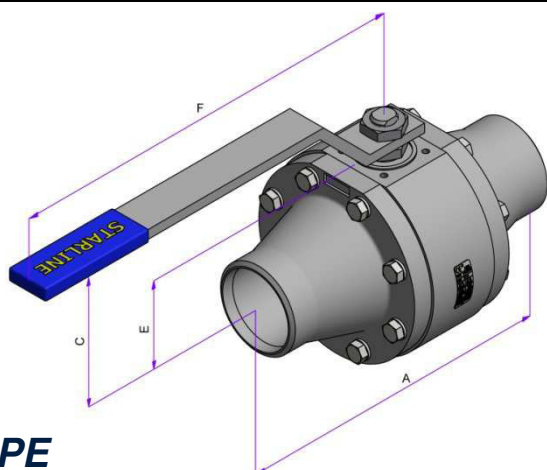
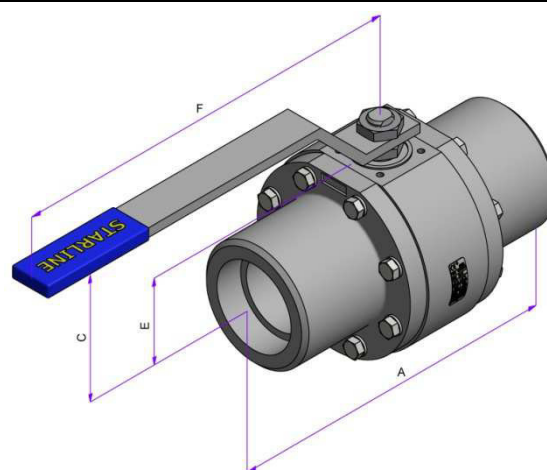


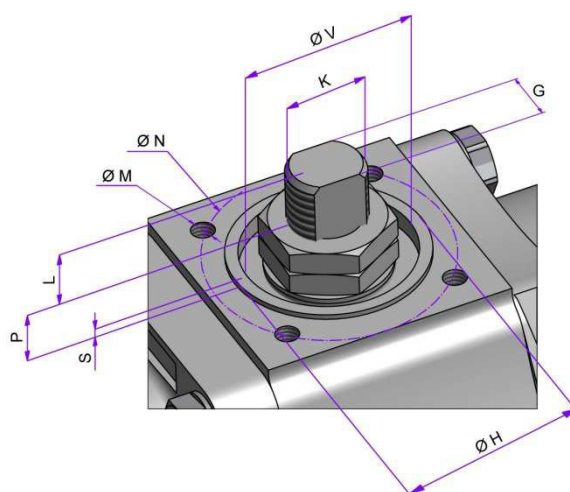
ITEM NO.	Q.TY	PART NAME	MATERIAL (LF2/316)	MATERIAL (316/316)	OPTIONS AVAILABLE
NP	1	Name Plate	316	316	
1	1	Handle	Carbon Steel + Plastic	Carbon Steel + Plastic	316
2a	2	Handle nuts	304	304	316
2b					
3	2	Packing ring	Graphite	Graphite	Virgin/Reinforced PTFE
5	1	Antistatic stem	316/316L Dual Certified	316/316L Dual Certified	Special materials
6	1	Gland packing	316	316	
7	1	Thrust washer	PTFE	PTFE	Reinforced PTFE – PEEK
8	2	“O”ring stem	Viton	Viton	See seats and seals material table
9	1	Ball	316/316L Dual Certified	316/316L Dual Certified	Special materials
10	2	Seats	RPTFE	RPTFE	See seats and seals material table
10a	2	Seats gasket	Viton	Viton	See seats and seals material table
11	2	I° Body seals	RPTFE	RPTFE	See seats and seals material table
12	1	Body	LF2	316/316L Dual Certified	Special materials
13	2	End connections	LF2	316/316L Dual Certified	Special materials
14	1	Stop-pin	316	316	
16	16	Bolts	A320 L7 + Zinc Plated	A193 B8	Special materials
18	2	II° Body seals	Graphite	Graphite	Virgin PTFE



BW-PE



SW



**TOP
VIEW**

REDUCED BORE									
VALVE SIZE		DIMENSIONS [mm]						WEIGHT [Kg]	
NPS	DN	A		BORE	C	E	F	SW	BW - PE
		SW	BW - PE						
4" x 3"	100 x 80	305	305	76	150	87	420	25.5	25.5

TOP MOUNTING											
VALVE SIZE		DIMENSIONS [mm]									ISO 5211
NPS	DN	L	P	S	V	K	G	H	N	M	
4" x 3"	100 x 80	15	22.5	1.5	48	M24x2	18	55	70	M8x12	F07