

AKOALARM

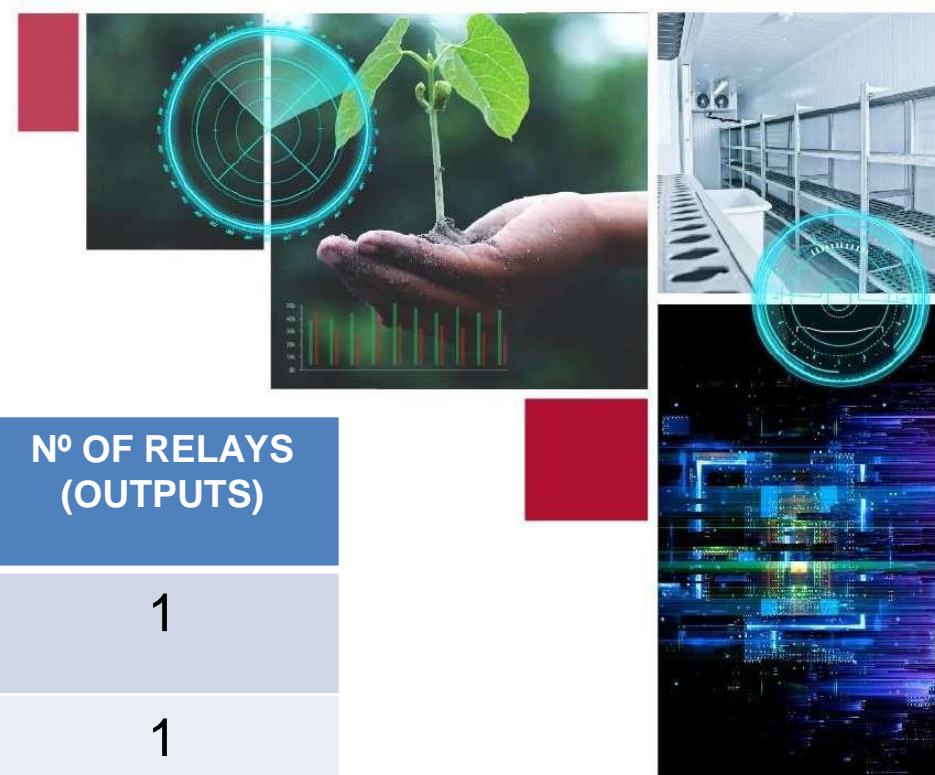
DAHL RANGE 2023



AKO ALARMS

Different alarm stations to cover a wide range of needs

Find out which model suits you best:



	PUSHBUTTONS INPUTS	GAS DETECTORS INPUTS	Nº INPUTS	Nº OF RELAYS (OUTPUTS)
K4440005 /AKO-55123	✓	✗	1	1
K4440007 / AKO-55424	✓	✗	4	1
K4440008 / AKO-55624	✗	✓	1	3
K4440009 / AKO-55724	✗	✓	4	6
K4440016 / AKO-555241	✓	✓	2	4
K4440015 / AKO-555242	✓	✓	4	6

ALARM FOR TRAPPED PERSON

K4440005 (AKO-55123B)

(Outdoor alarm + 1 pushbutton)

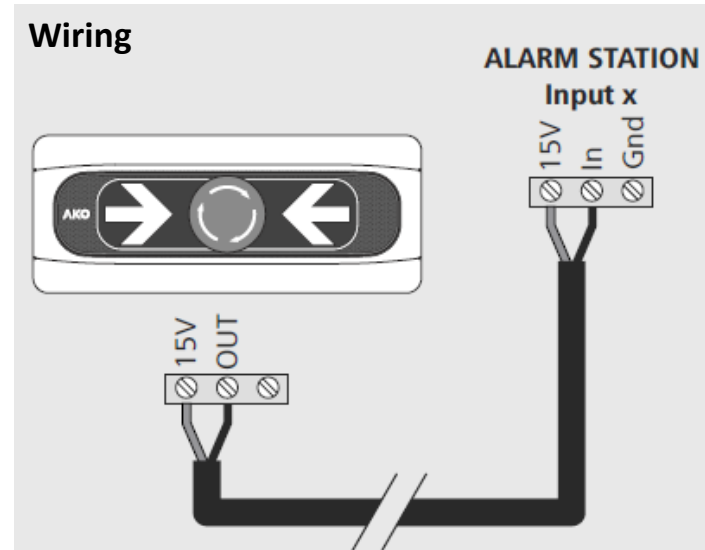


1. Kit comprised of **outdoor alarm station + 1 pushbutton**
2. **MODBUS** communication
3. Powerful sound alarm (90dB at 1 meter)
4. Visual alarm in a big display
5. Power supply **100-240V**

USER MANUAL: <https://help.ako.com/assets/uploads/355532301-1.pdf>

QUICK GUIDE: <https://help.ako.com/assets/uploads/355532312.pdf>

For cold rooms **down to -50°C**



AKO

ALARM FOR TRAPPED PERSON

K4440005 (AKO-55123B)

(Outdoor alarm + 1 pushbutton)



For cold rooms **down to -50°C**

6. **Alarm relay** to send SMS in the event of an emergency
7. High watertight protection **IP65**
8. 1 pushbutton included, the only in the market **that operates down to -50°C**
9. In-built battery ensuring **10 hour autonomous operation** (in alarm state) to comply with current regulation

USER MANUAL: <https://help.ako.com/assets/uploads/355532301-1.pdf>

QUICK GUIDE: <https://help.ako.com/assets/uploads/355532312.pdf>

ALARM FOR TRAPPED PERSON

K4440007 (AKO-55424B)

(Outdoor alarm + 2 pushbuttons)



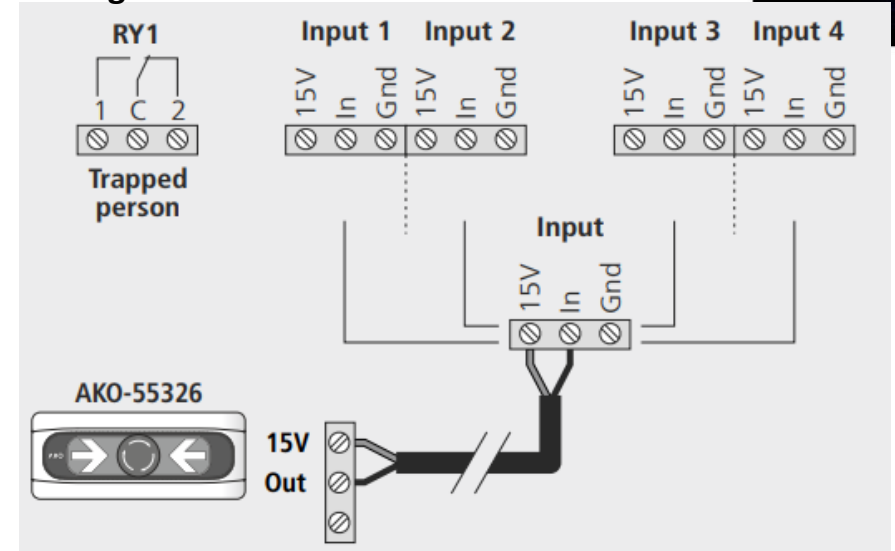
1. 4 inputs 0-15V
2. MODBUS communication
3. Powerful sound alarm (90dB at 1 meter)
4. Visual red icons (when in alarm) in a big display
5. Power supply **100-240V**

USER MANUAL: <https://help.ako.com/assets/uploads/355542402-2.pdf>

QUICK GUIDE: <https://help.ako.com/assets/uploads/355542412-1.pdf>

For cold rooms **down to -50°C**

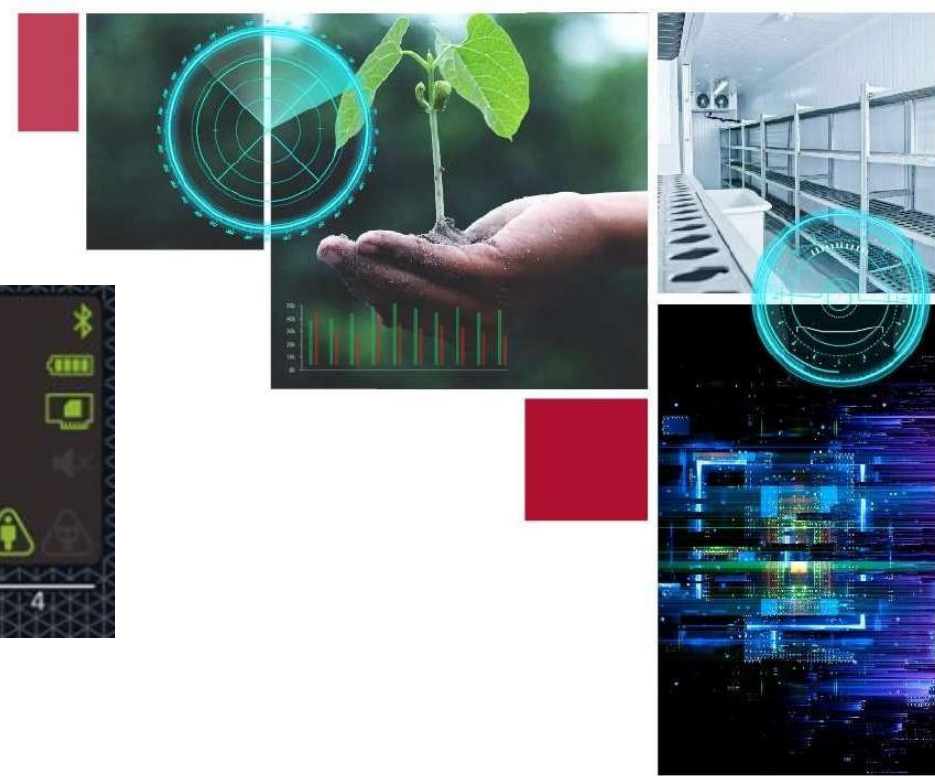
Wiring



ALARM FOR TRAPPED PERSON

K4440007 (AKO-55424B)

(Outdoor alarm + 2 pushbuttons)



6. **Alarm relay** to send SMS in the event of an emergency
7. High protection degree **IP65**
8. **2 pushbuttons included**, the only in the market **that operates down to -50°C**
9. In-built battery ensuring **10 hour autonomous operation** (in alarm state) to comply with current regulation

USER MANUAL: <https://help.ako.com/assets/uploads/355542402-2.pdf>

QUICK GUIDE: <https://help.ako.com/assets/uploads/355542412-1.pdf>

ALARM FOR GAS DETECTORS

K4440008 (AKO-55624)

External alarm station 1 input



1. **To be used with** AKO gas detectors (all models)
2. Including **3 relays**: for pre-alarm, alarm and Gas System Failure
3. **Digital inputs** for remote mute, remote SET-HOLD
4. SET-HOLD mode avoids false alarms during cleaning / loading process
5. **MODBUS** communication
6. Powerful sound alarm (90dB at 1 meter)
7. Visual alarm in a big display
8. Power supply **100-240V**

USER MANUAL: <https://help.ako.com/assets/uploads/355572402-3.pdf>

QUICK GUIDE: <https://help.ako.com/assets/uploads/355572412-1.pdf>



ALARM FOR GAS DETECTORS

K4440009 (AKO-55724)

External alarm station **4 inputs**



BIG DISPLAY



1. To be used with AKO gas detectors (all models)
2. Four inputs that can be set-up as **4 zones** (1 detector per cold room) or **2 zones with 2 detectors** (2 per cold room)
3. Including **6 relays**, one for Gas Failure System
4. **Digital inputs** for remote mute, remote SET-HOLD
5. **MODBUS** communication
6. Powerful sound alarm (90dB at 1 meter)
7. Visual alarm in a big display
8. Power supply **100-240V**

USER MANUAL: <https://help.ako.com/assets/uploads/355572402-3.pdf>

QUICK GUIDE: <https://help.ako.com/assets/uploads/355572412-1.pdf>

ALARM FOR GAS DETECTORS

K4440009 (AKO-55724)

External alarm station **4 inputs**

- **4 zones** (1 detector per cold room) OR
- **2 zones with 2 detectors** (2 per cold room)



USER MANUAL: <https://help.ako.com/assets/uploads/355572402-3.pdf>

QUICK GUIDE: <https://help.ako.com/assets/uploads/355572412-1.pdf>



MULTIPURPOSE SECURITY ALARM

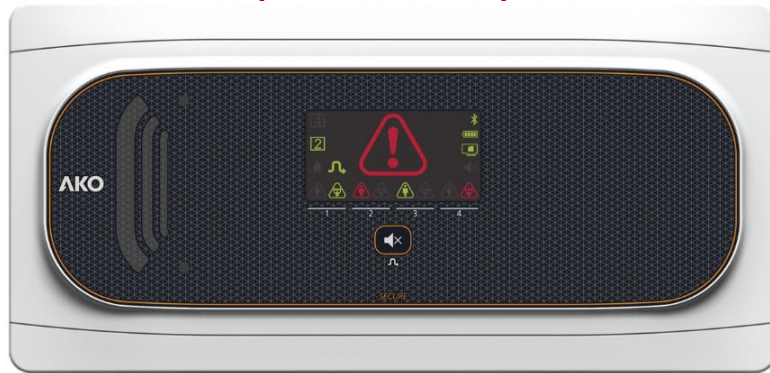
Inputs for pushbuttons and gas detectors

K4440016 (AKO-555241)



1. **2 inputs** compatible with AKO gas detectors and/or
2. pushbuttons for trapped person
3. **4 relays** including one for GAS SYSTEM FAILURE
4. MODBUS communication
5. Sound & visual alarm
6. Power supply **100-240V**
7. In-built battery ensuring **10 hour autonomous operation** (in alarm state) to comply with current regulation

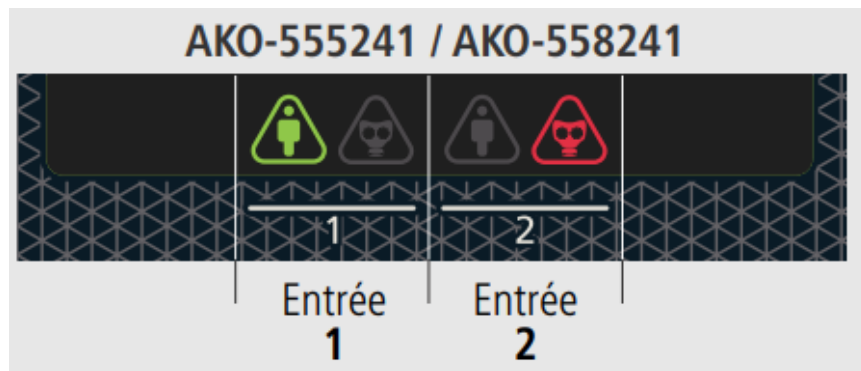
K4440015 (AKO-555242)



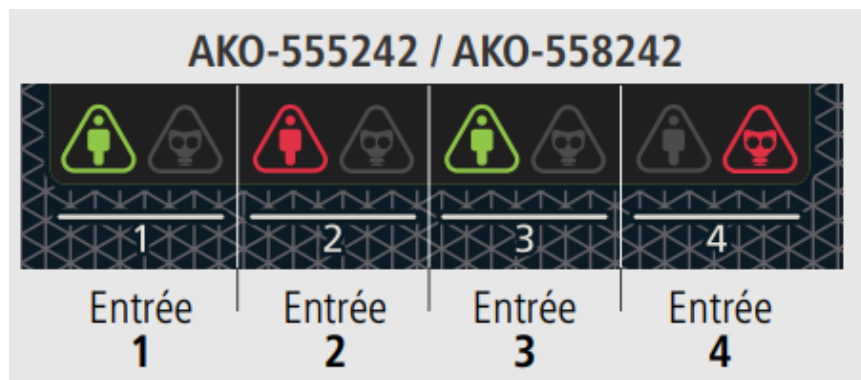
1. **4 inputs** compatible with for AKO gas detectors (all models) and/or
2. pushbuttons for trapped person
3. **6 relays** including one for GAS SYSTEM FAILURE
4. MODBUS communication
5. Sound & visual alarm
6. Power supply **100-240V**
7. In-built battery ensuring **10 hour autonomous operation** (in alarm state) to comply with current regulation

MULTIPURPOSE SECURITY ALARM

Inputs for pushbuttons and gas detectors



RED icons to signal alarms



GREEN icons to signal:

- ☐ Battery status
- ☐ Power supply ON/OFF
- ☐ Bluetooth
- ☐ MUTE alarm
- ☐ Etc...

USER MANUAL: <https://help.ako.com/assets/uploads/355552402-3.pdf>
QUICK GUIDE: <https://help.ako.com/assets/uploads/355552412-1.pdf>

AKOALARMS

DAHL RANGE 2023