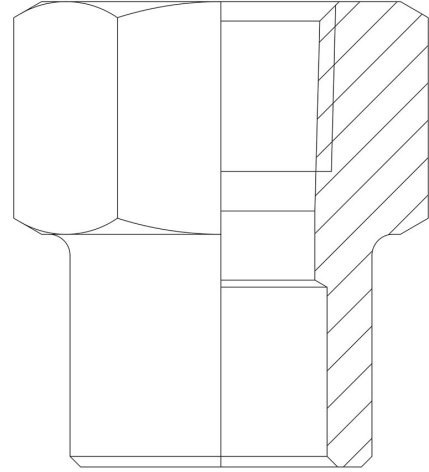


Product Code

3035/4

Safety Valve Inlet Union
1/2"NPTx22mm ODS



GO GREEN

STABILITÀ - NATURALITÀ - EFFICIENZA

POLYHEDRA

CLASSIC

Product use

Standard fittings in series 3035 allow the assembly of: safety valves, bursting discs, shut-off valves and switching valves near the equipment to be protected under pressure in the system.

The fittings have been designed to be used on a copper branch or directly on the main copper line, making a hole.

Product details

Connections NPT 1/2"

Connections ODS Ø [mm] 22

PS [bar] 150

Package pcs 60