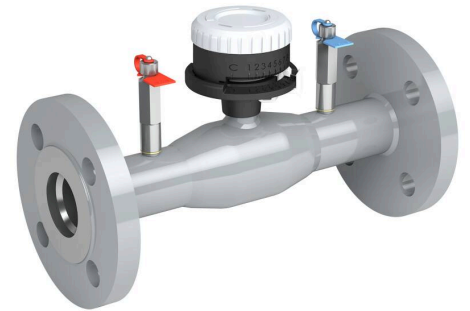


X-balancing valves, stainless steel, reduced bore

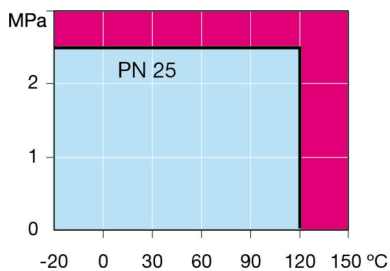
243X series, X-series, flange / flange, DN 15-50, reduced bore

Body	DN 15-50 Stainless steel, AISI316L (1.4404)
Ball	DN 15-50 Stainless steel, AISI316L (1.4404), flowtube composite
Ball seal	DN 15-50 PTFE+C
Stem	DN 15-50 Stainless steel, AISI316L (1.4404)
Stem seal	DN 15-50 FPM/NBR
Measuring block	DN 15-50 Self-sealing, stainless steel, X8CrNiS18-9 (1.4305)
Operation	DN 15-50 with precision control knob
Flanges	EN 1092-1 Available PN 10, 16, 25, 40



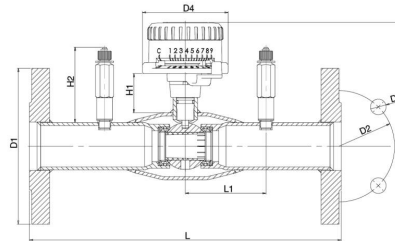
Operation conditions

-20 ° – +120 °C
Below -20 °C contact manufacturer
Lowest allowed ambient temperature -40 °C
Leakage rate A (EN 12266-1)



Not for steam

DN 15-50



DN	PN	Product no.	D1	D2	D3	D4	H	H1	H2	L	L1	kg
15	25	243015X	95.0	65.0	14.0	77.0	101	38.5	68	250	73	1.9
20	25	243020X	105.0	75.0	14.0	77.0	105	38	68	250	73	2.5
25	25	243025X	115.0	85.0	14.0	77.0	107	37	68	240	73	3.0
32	16	243032X	140.0	100.0	18.0	77.0	111	35	68	280	73	4.8
40	25	243040X	150.0	110.0	18.0	77.0	116	35	68	270	73	5.6
50	25	243050X	165.0	125.0	18.0	77.0	123	39	68	310	73	7.7

Vexve's balancing valves can be found e.g. from libraries of TA-SCOPE and SmartBalancing measuring devices.